

**Q.1) (A) Choose the correct alternative.**

5

- (i) Oikopleura belongs to Sub-phylum \_\_\_\_\_  
 (a) Cephalochordata            (b) Craniata            (c) Urochordata            (d) Vertebrata
- (ii) Brain development in adolescents is hindered due to \_\_\_\_\_.  
 (a) Alcoholism            (b) yogasanas            (c) smoking            (d) gardening
- (iii) Sunderban Sanctuary is located in \_\_\_\_\_.  
 (a) Chennai            (b) Assam            (c) New Delhi            (d) West Bengal
- (iv) \_\_\_\_\_ evolved from Neanderthal man about 50 thousand years ago.  
 (a) Cro-Magnon man            (b) Dryopithecus            (c) Australopithecus            (d) Ramapithecus
- (v) Bt cotton produces toxin which is fatal for \_\_\_\_\_.  
 (a) budworms            (b) earthworms            (c) bollworms            (d) roundworms

**Q.1)(B) Answer the following questions.**

5

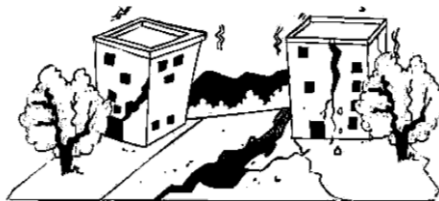
(i) Name the following.

Conventional sources of energy →

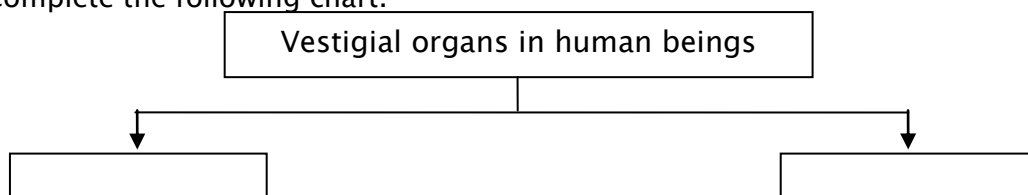
(ii) Identify the ODD one out.

Malathion, Urea, DDT, Chloropyriphos

(iii) Identify the disaster seen in the picture.



(iv) Complete the following chart.



(v) How is Xanthan gum produced?

**Q.2) A) Give scientific reasons: (Any 2)**

4

- (i) Androecium and Gynoecium are called 'essential whorls' of a flower.
- (ii) Lamarck's theory of inheritance of acquired characters was rejected.
- (iii) Balanoglossus is a connecting link between non-chordates and chordates.

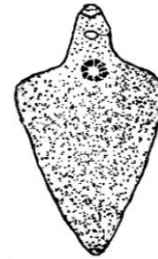
**Q.2) B) Answer the following questions. (Any 3)**

6

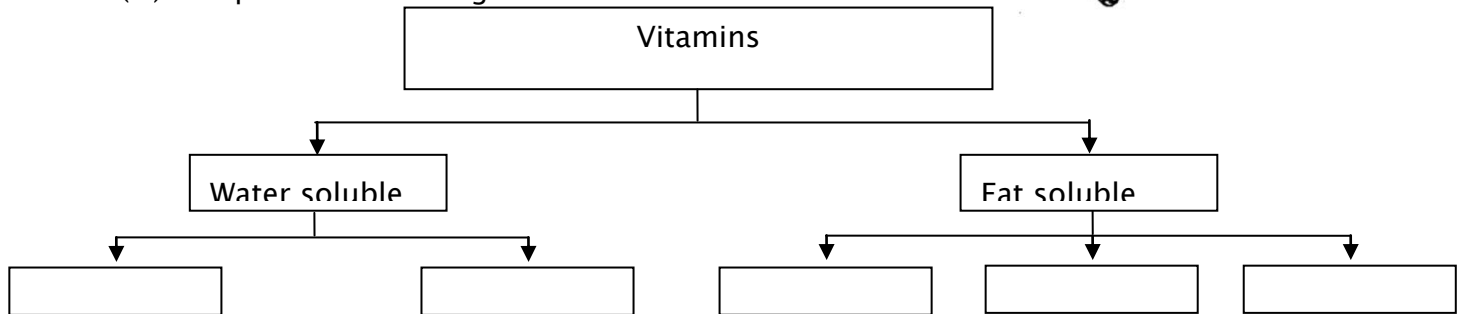
(i) Identify the type of disaster and complete the table given below.

Disaster	Type
Famine	
Forest Fire	
Terrorism	
Theft	

(ii) Identify the animal in the figure.  
Which phylum does it belong to ?



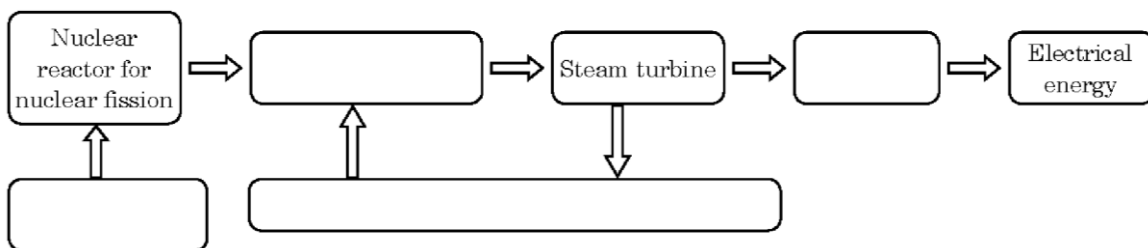
(iii) Complete the following chart.



(iv) What will you do ? Why?

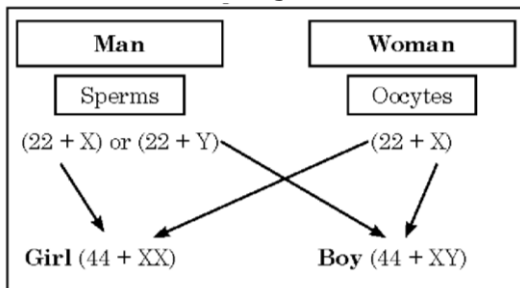
Your sister has become incommunicative. She prefers to remain alone.

(v) Complete the following flow chart.



**Q.3) Answer the following questions. (Any 5)**

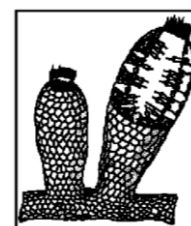
(i) Observe the chart given below and answer the following questions.



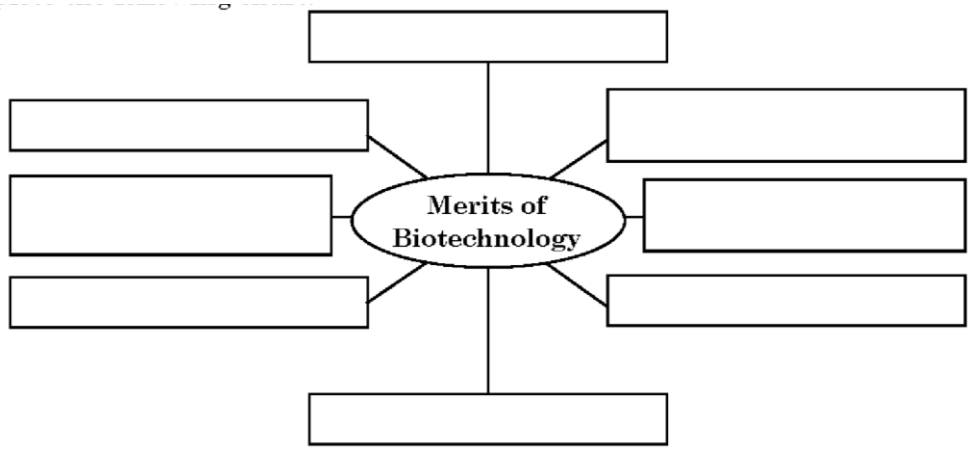
- (a) What is the chromosome number of germ cell producing gametes?
- (b) How many autosomes are present in a human male?
- (c) By which cell division are sperms and oocytes formed?

(ii) Observe the figure given alongside and answer the questions.

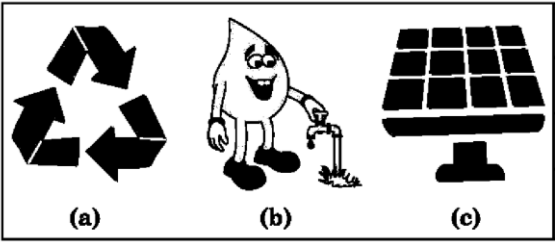
- (a) Name the animal seen in the figure.
- (b) Which Phylum does the animal belong to ?
- (c) Name the two pores found on the animal's body.



(iii) Complete the following Chart.

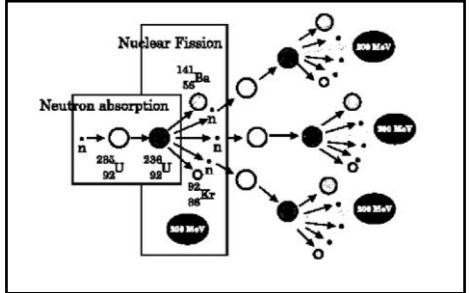


(iv) What are the meaning of following symbols? Write your role accordingly?



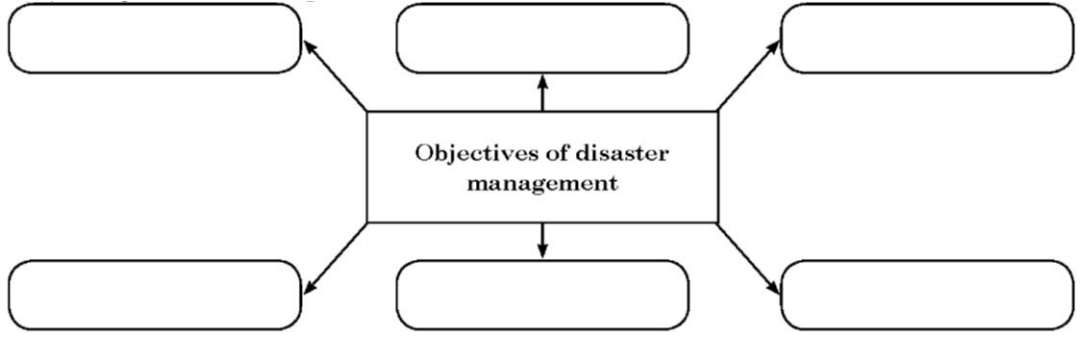
Symbol	Meaning	Role
(a)		
(b)		
(c)		

(v) Observe the following figure and answer the questions given below.

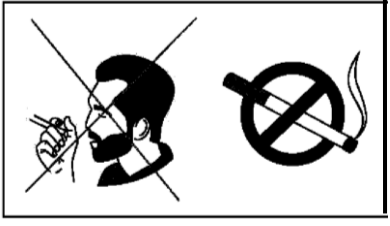


- (a) Which energy is generated in the above process?
- (b) Which process is the above reaction based on ?
- (c) Is the energy generated environment friendly? Why ?

(vi) Complete the following chart.



(vii) Observe the figure and answer the given questions.



- (a) What does the given figure depict ?
- (b) Name the harmful substance present in cigarette.
- (c) Name two organs affected by cigarette smoking.

(viii) How does bread become spongy?

Q.4) Answer the following Questions. (any 1)

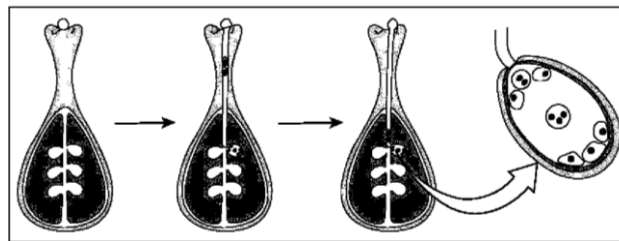
5

(i) Complete the Paragraph with the help of words given in the bracket.

(Carbon monoxide, biofuels, nitrogen trioxide, global warming, acid rain, carbon dioxide, fossil fuels, natural gas)

We have seen that burning of \_\_\_\_\_ like coal and natural gas leads to emission of certain gases and soot particles. This results in air pollution. Incomplete combustion of fuels leads to formation of \_\_\_\_\_. Increase in percentage of \_\_\_\_\_ in the air due to burning of fuels affects environment severely. The phenomena of \_\_\_\_\_ is an example of this. Nitrogen dioxide generated due to burning of fuels like coal, diesel, petrol, etc. lead to problems like. \_\_\_\_\_

(ii) Observe the following figure and answer the questions.



(a) Which process does the above figure show? Label it properly.

(b) In which group of plants does the above process take place?

(c) Which cells are involved in this process?

(d) In which plant part does this process take place?

\*\*\*\* \_\_\_\_\_ \*\*\*\*